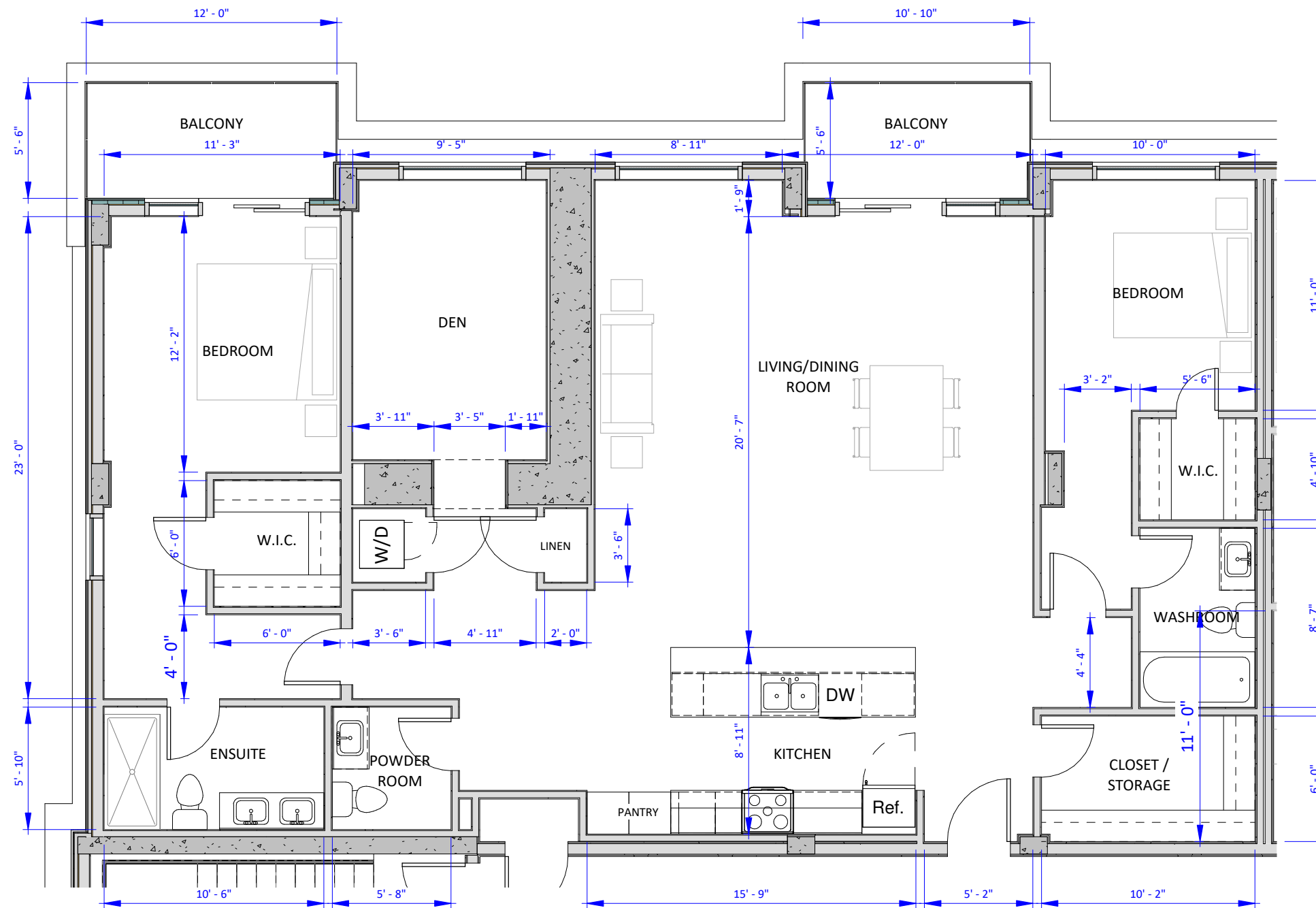


1

Suite 201 & 301 (2 Br)

UNIT AREA = 206m² (2,217 ft²)
 CALCULATED TO CENTRELINE
 OF ALL WALLS AS PER BC
 STRATA ACT

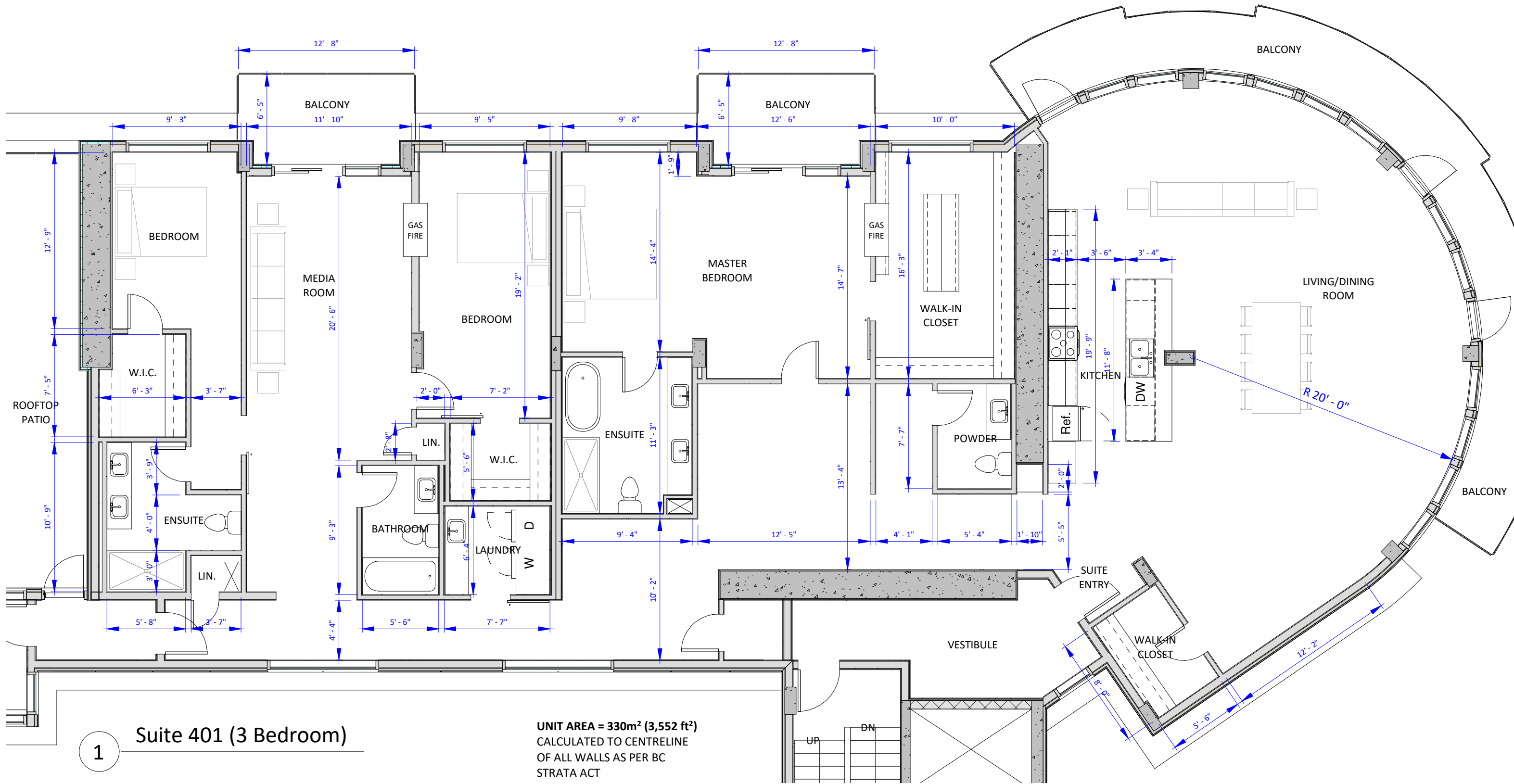




1 Suite 202 & 302 (2 Br)

UNIT AREA = 163m² (1,755 ft²)
 CALCULATED TO CENTRELINE
 OF ALL WALLS AS PER BC
 STRATA ACT





1 Suite 401 (3 Bedroom)

UNIT AREA = 330m² (3,552 ft²)
 CALCULATED TO CENTRELINE
 OF ALL WALLS AS PER BC
 STRATA ACT

